

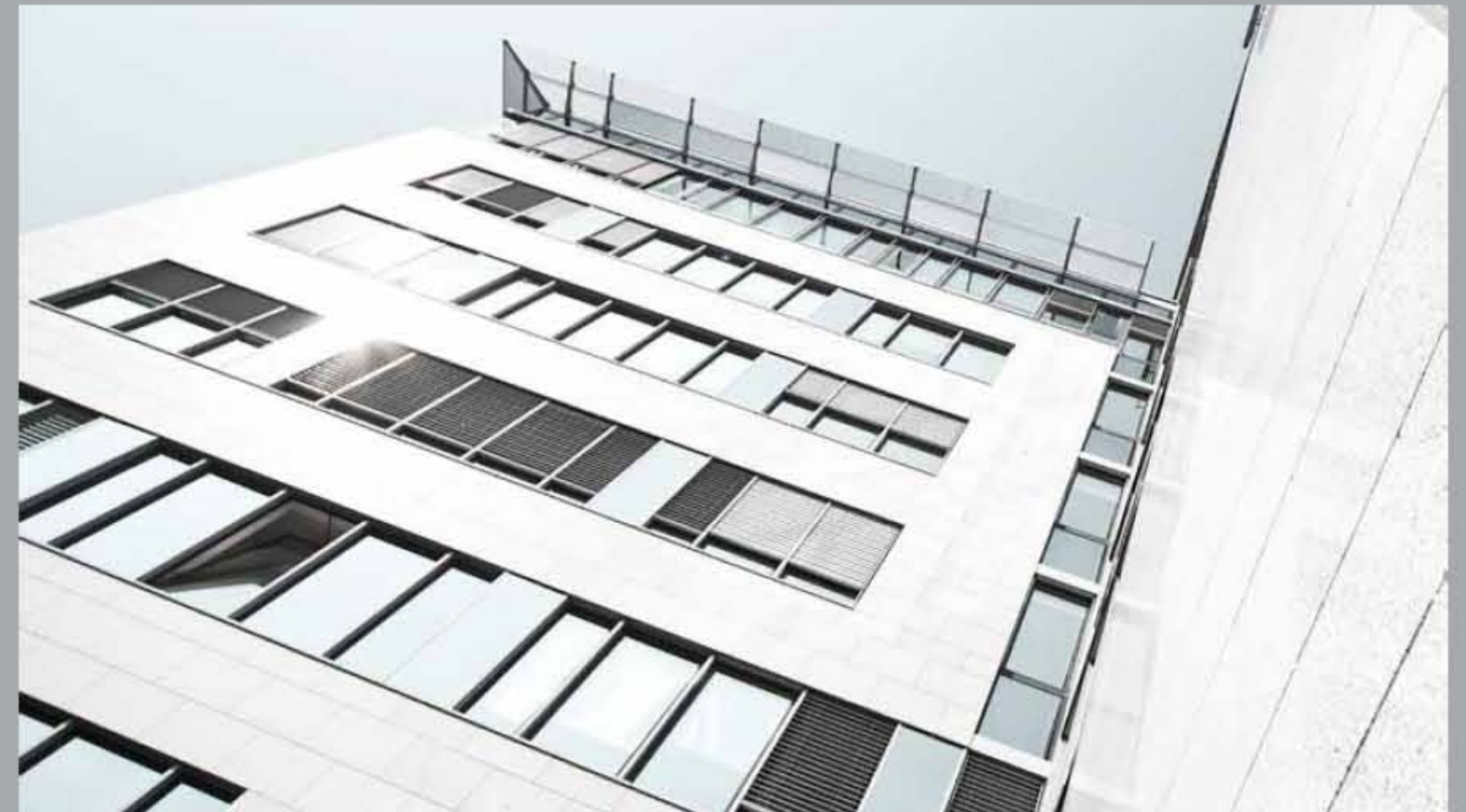
Test Pass by Alstrong Wall Panels with *Zinnia™* Technology



Exterior Wall Installation:

Alstrong Wall Panels can be installed through various methods described below :

1. Wall Panels installation with Rivets on Aluminium tubes with no gap, 6 mm and 8 mm gap
2. Wall Panels installation with fixed clamp directly on wall with 8 mm gap
3. Wall Panels installation with Fixed clamps – U Groove
4. Wall Panels installation with Adjustable clamps with Insulation – U Groove



1. Wall Panels installation with Rivets on Aluminium tubes with no gap, 6 mm and 8 mm gap

Step 1:

Wall preparation: Wall need to be plastered well and painted with black paint before starting the installation

Substructure: The aluminium substructure basically consists of vertical support profiles which are mounted on the wall using angle brackets.

Fix Aluminium tubes (thickness - 2 mm) on the wall with help of Aluminium angle brackets. Maintain horizontal distance between two aluminium tubes to a maximum of 450 mm (18")

Sizes: 25 X 75 mm (1" X 3") for horizontal joints between 02 planks
25 X 40 mm (1" X 1.5") for all other planks

Step 2:

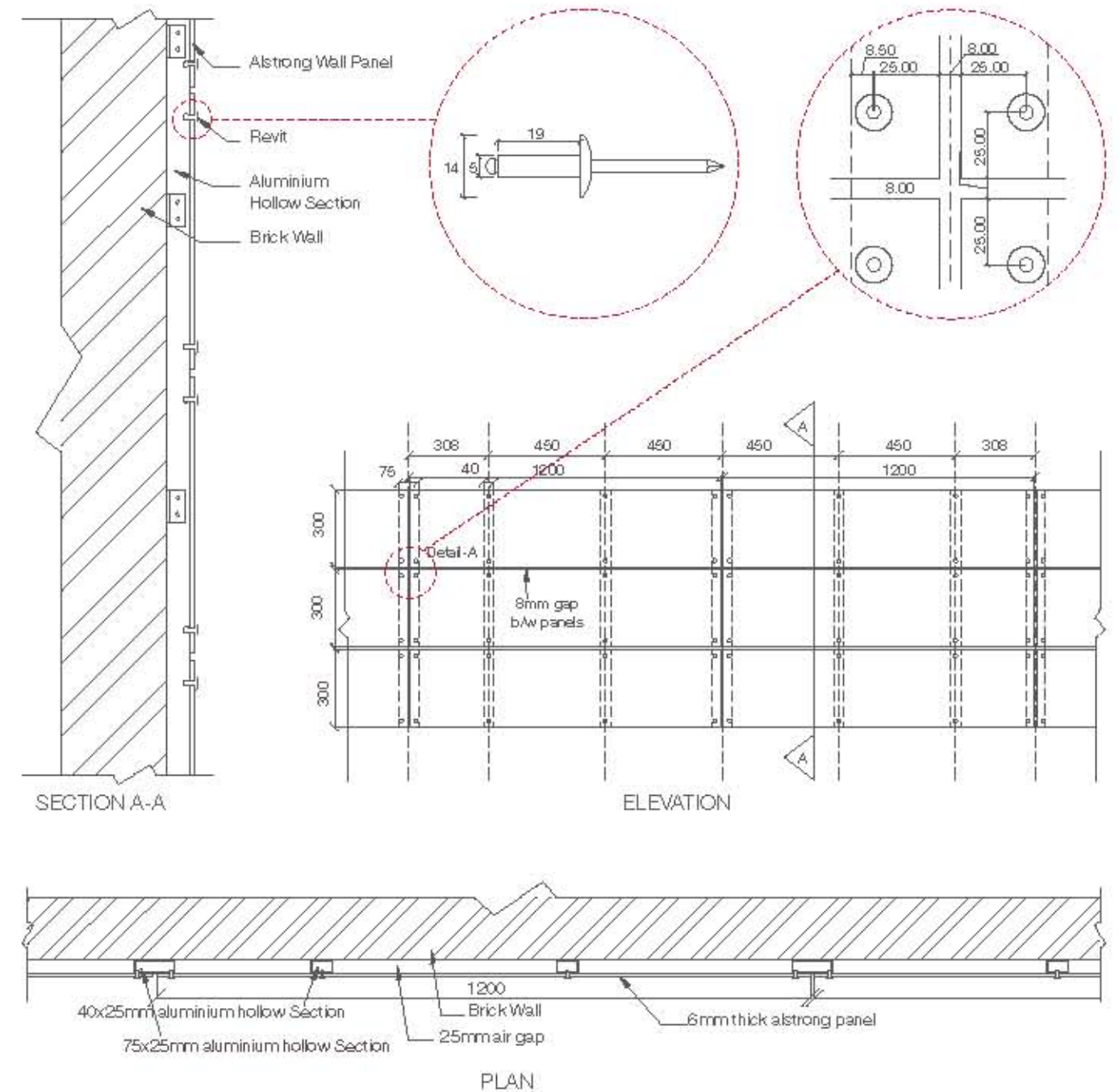
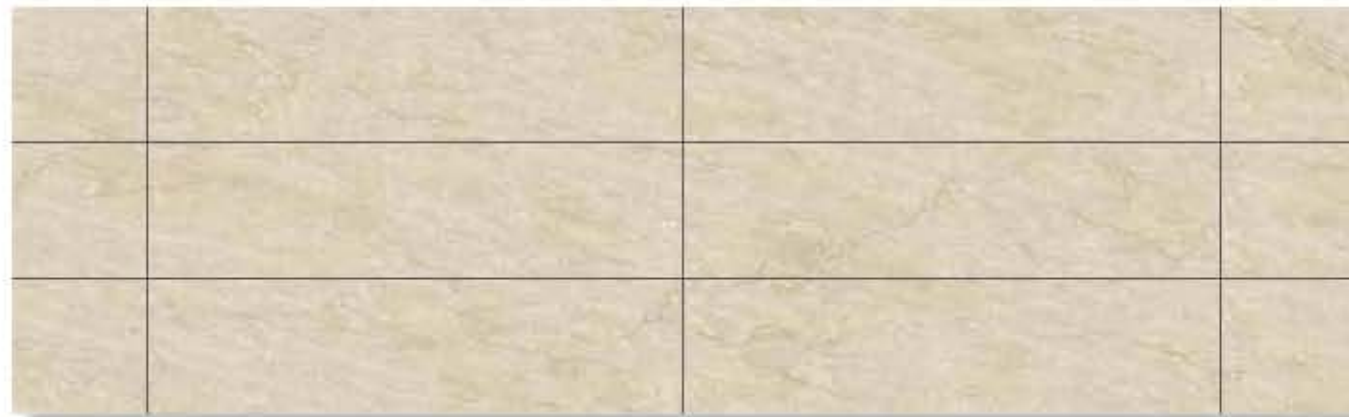
Use from standard sizes of Wall Panels as per the customer requirement. Installation can start from the Lower corner from left or center depending on uniformity of the facade.

Step 3:

Drill Alstrong Wall Panel – plank with the help of 5 mm drill bit at a distance of 25mm from both the edge

Step 4:

Install the plank on the wall with the help of rivet gun. Use Rivet gun recommended by Alstrong for better results. Only use Rivets supplied by Alstrong.



2. Wall Panels installation with fixed clamp directly on wall with 8 mm gap

Step 1:

Preparation: Wall preparation: Wall need to be plastered well and painted with black paint before starting the installation

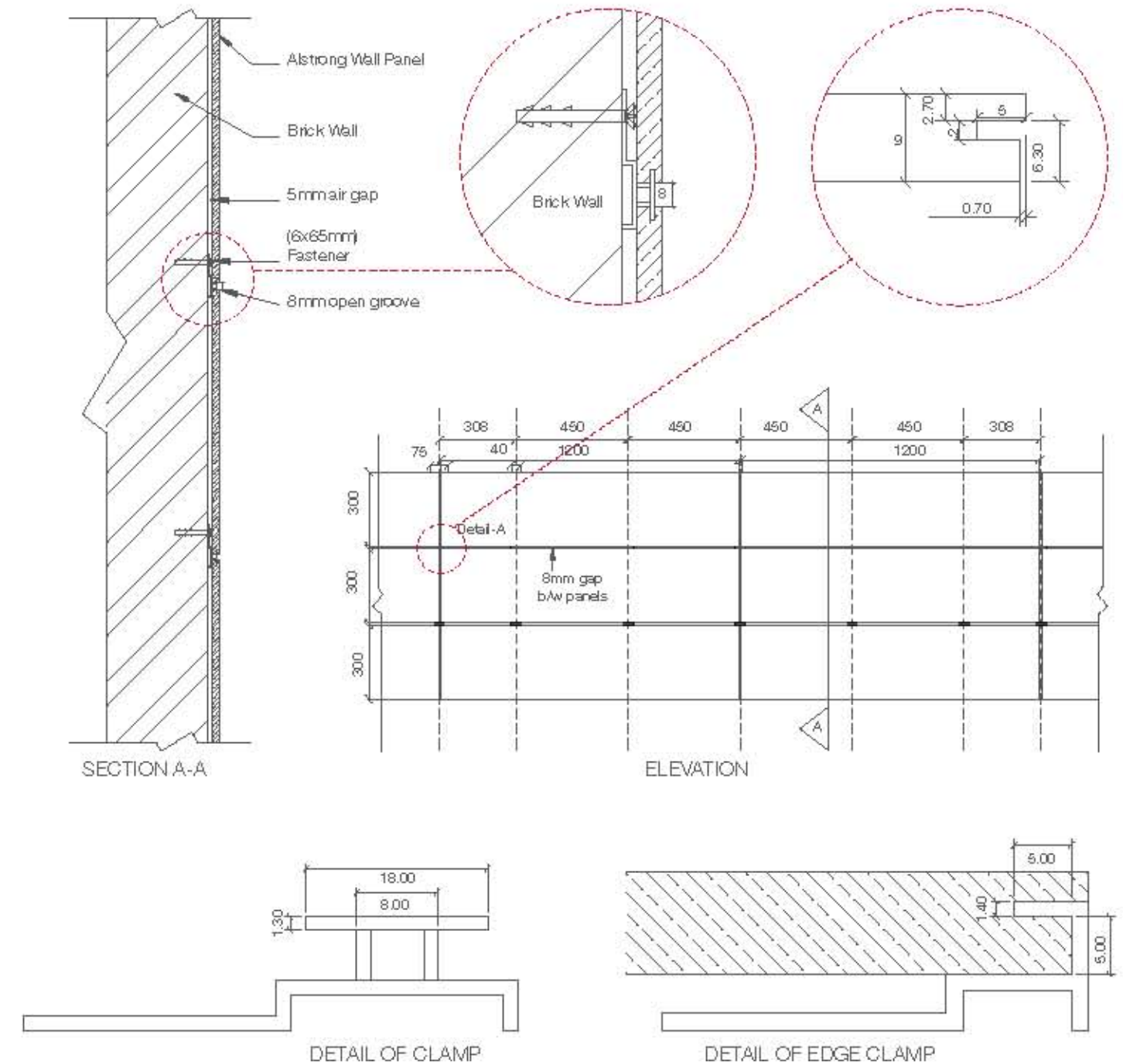
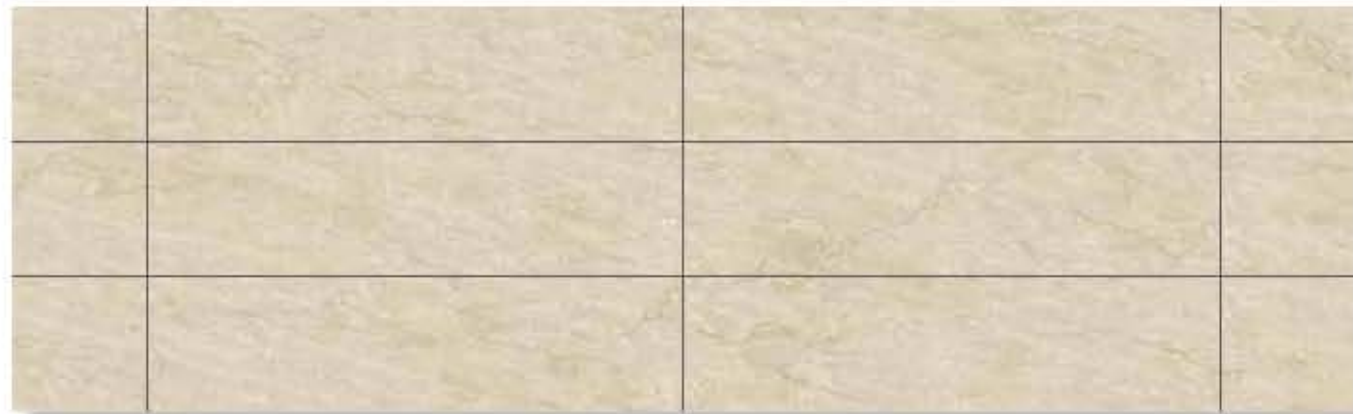
To achieve visually appealing facade and cost efficient installation, choose from standard sizes of Alstrong Wall Panels, depending on the site requirement to minimize manual cutting at the site thereby saving on time.

Step 2:

Fix clamps on the wall with the help of 6 X 65 mm SS Fastener & maintain 450 mm distance between adjacent clamps both horizontally & vertically. In case of uneven surface align clamps with the help of washers so that level is maintained between the panels. Fix panel on to the clamps. Installation can start from the Lower corner from left or center depending on uniformity of the façade.

Step 3:

There would be groove of 8 mm open in between the planks to give it a natural look. Repeat the process for further installing the panels.



3. Wall Panels installation with Fixed clamps – U Groove

Step 1:

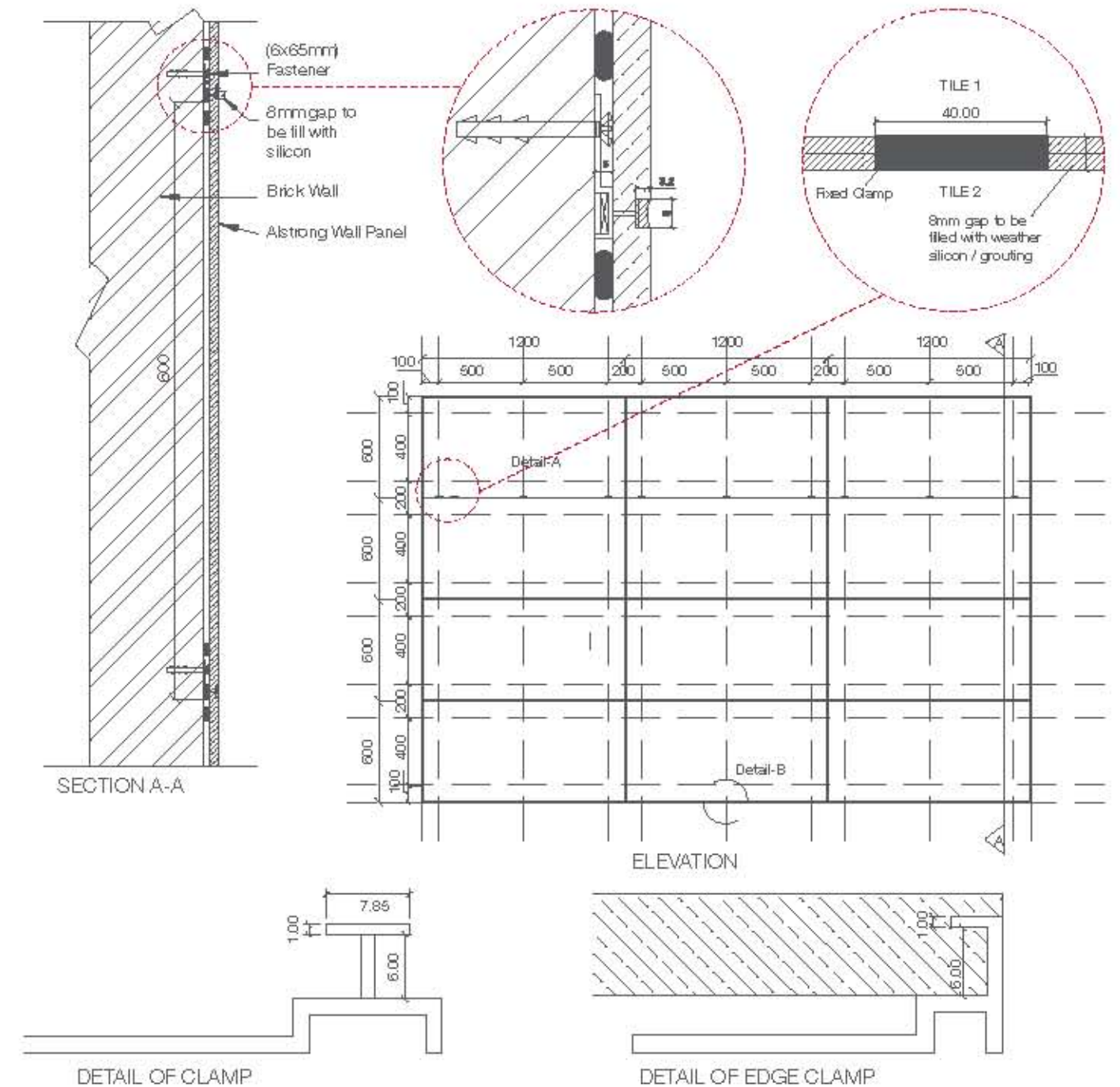
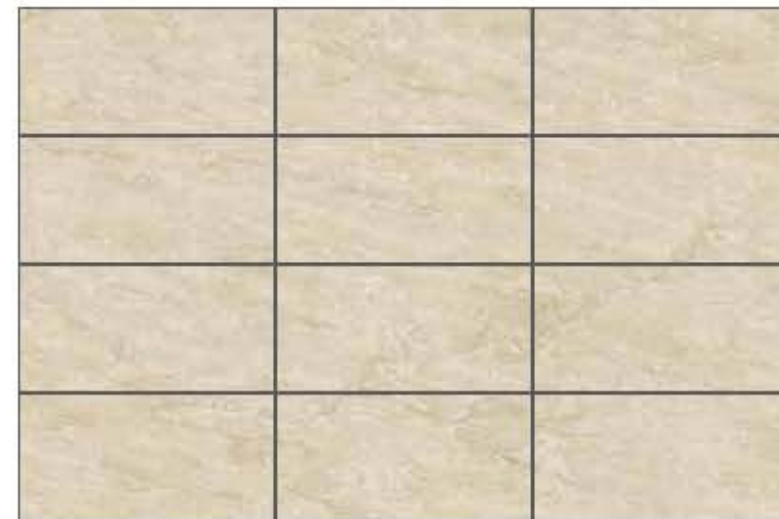
Preparation: To achieve visually appealing facade and cost efficient installation, choose from standard sizes of Alstrong Wall Panels, depending on the site requirement to minimize manual cutting at the site thereby saving on time.

Step 2:

Fix clamps on the wall with the help of 6 X 65 mm SS Fastener & maintain 600 mm distance between adjacent clamps both horizontally & vertically. In case of uneven surface align clamps with the help of washers so that level is maintained between the panels. Fix panel on to the clamps. Installation can start from the Lower corner from left or center depending on uniformity of the façade.

Step 3:

For filling joints between the two panels fill the gap with the help of Silicon or Epoxy based grouting. Repeat the process for further installing the panels.



4. Wall Panels installation with Adjustable clamps with Insulation – U Groove

Step 1:

Preparation: To achieve visually appealing façade and cost efficient installation, choose from standard sizes of Alstrong Wall Panel (U groove) with insulation, depending on the site requirement to minimize manual cutting at the site thereby saving on time.

Step 2:

Fix clamps on the wall with the help of 6 X 65 mm SS Fastener & maintain 600 mm distance between adjacent clamps both horizontally & vertically. Fix panel attached with insulation on to the clamps. Adjust clamps to maintain level between panels. Installation can start from the Lower corner from left or center depending on uniformity of the façade.

Step 3:

For filling joints between the two panels fill the gap with the help of Silicon or Epoxy based grouting. Repeat the process for further installing the panels.

